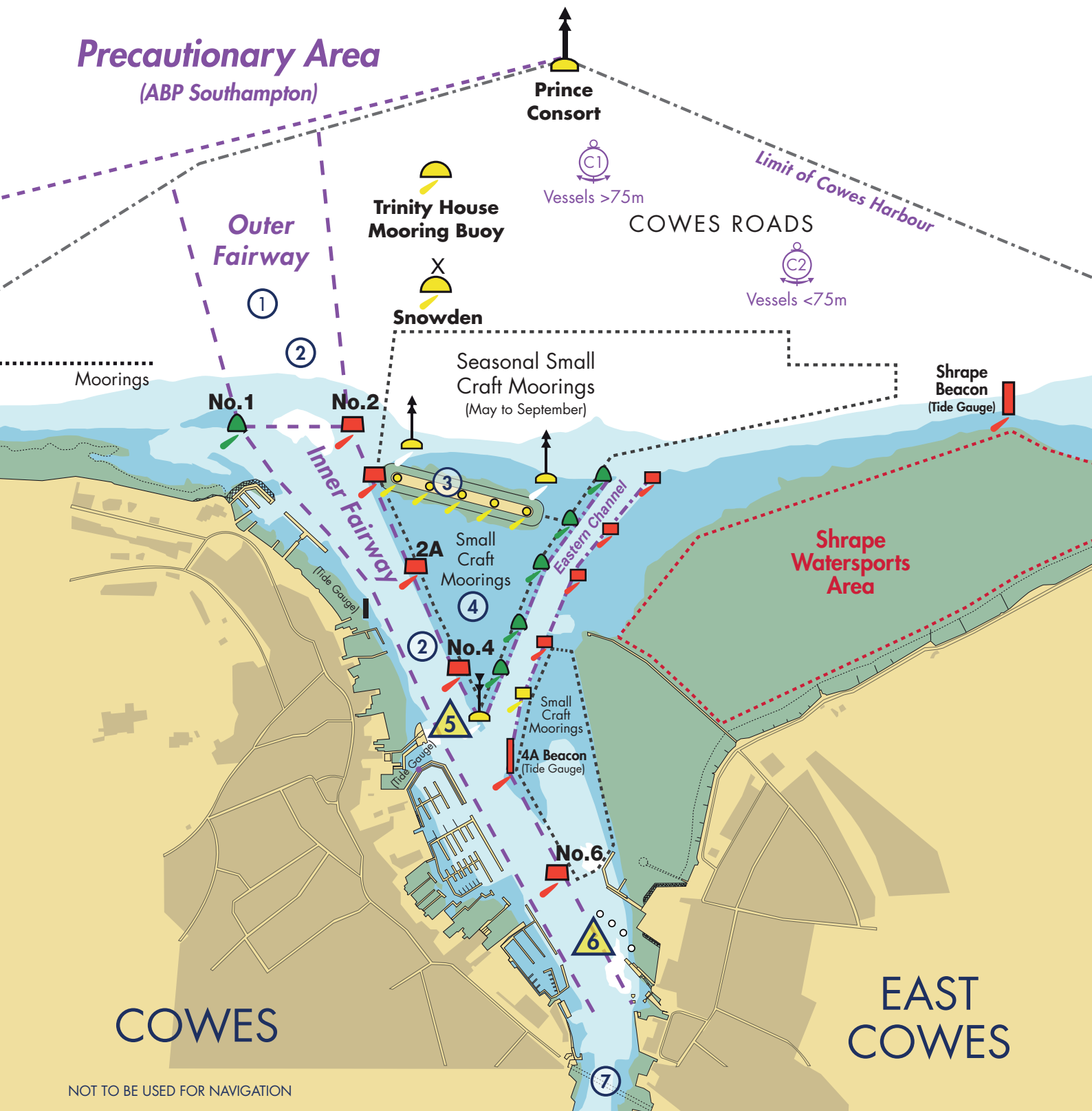


Precautionary Area

(ABP Southampton)



NOT TO BE USED FOR NAVIGATION

- ① Commercial ships/ferries maintain right of way over sailing vessels and vessels <20m in Outer and Inner Fairways.
- ② Strong tidal flows up to 3 knots.
- ③ Breakwater submerged obstruction extends 25m north and south of lit beacons, and to buoys marking western and eastern ends.
- ④ Beware of cross current up to 2 knots between HW-2.5hrs and HW.
- ⑤ Inner Fairway Precautionary Area - Red Jet Turning and Eastern Channel Traffic Convergence Area:
 - Beware of thrust from turning Red Jets. Do not overtake on starboard side of inbound Red Jets.
 - Eastern Channel traffic is advised to give way to Inner Fairway traffic.

- ⑥ Inner Fairway Precautionary Area - Red Funnel Vehicle and Freight Ferry Berthing Area:
 - Vehicle and freight ferries turn to port at No. 6 buoy and leave the Fairway.
 - Do not obstruct ferries arriving or departing East Cowes.
 - Beware of freight ferry frequent manoeuvres between berths at East Cowes terminal.
- ⑦ Give way to Chain Ferry:
 - Beware strong following tides. Ebb tide can exceed 4 knots.
 - Clearance depths over chains vary. Check advice in Local Notices to Mariners.