



COWES HARBOUR COMMISSION

LOCAL NOTICE TO MARINERS No. 16 of 2019

Cowes Harbour Inner Fairway Precautionary Areas

LNTM 04(T) of 2019 is hereby cancelled.

Notice is hereby given of two Precautionary Areas in Cowes Harbour Inner Fairway as specified below:

1. Red Jet Turning & Eastern Channel Traffic Convergence Area

Upon arrival in Cowes, the Red Jet High Speed passenger ferry executes a 180° turn prior to berthing alongside Jubilee Pontoon at Town Quay in Cowes. Significant wash is generated at the stern of the Red Jet during this manoeuvre.

Additionally, craft using the Cowes Harbour Eastern Channel will be merging into or diverging out of the main channel (Inner Fairway) in this area.

2. Red Funnel Vehicle & Freight Ferry Berthing Area

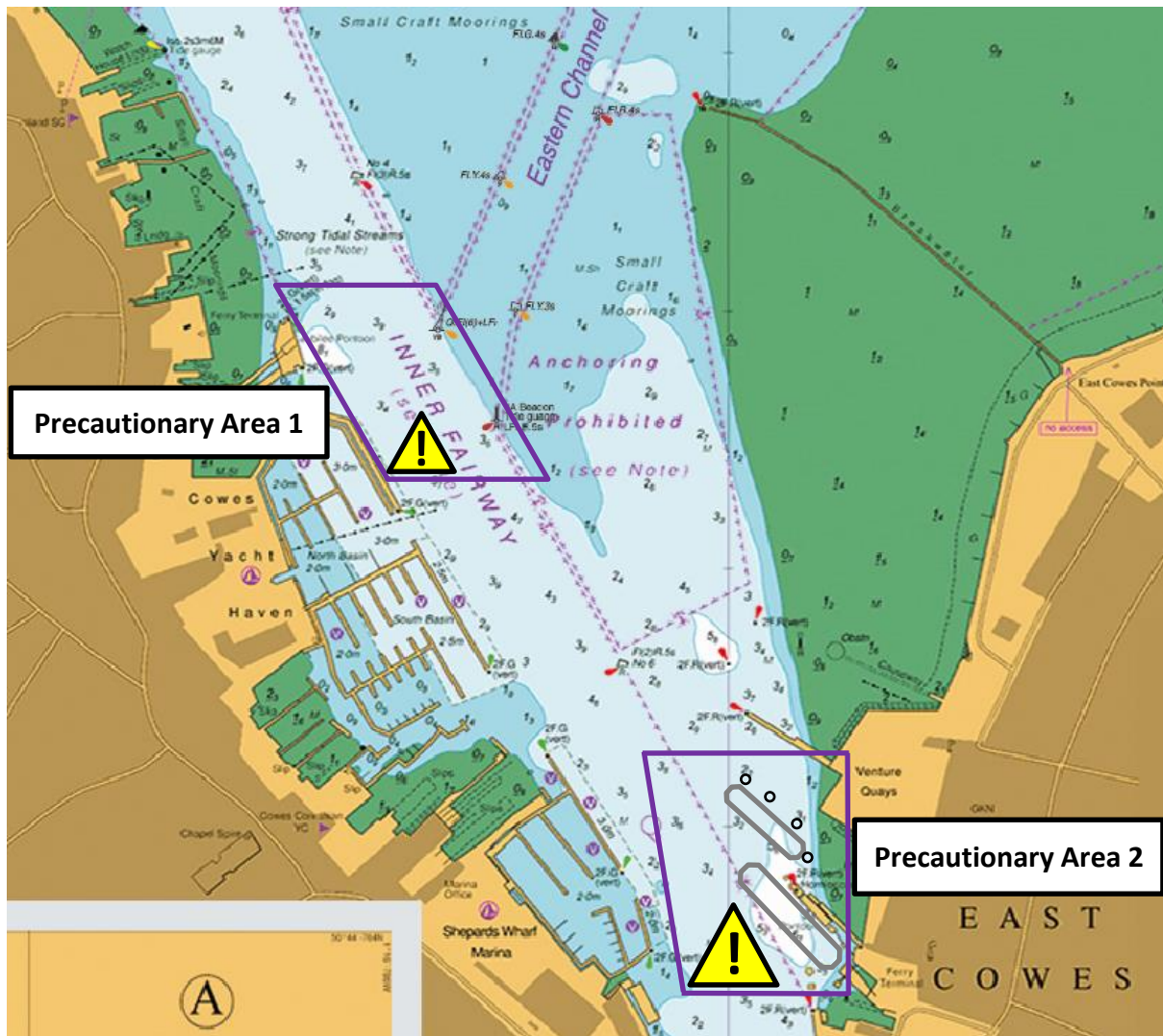
The Red Funnel freight ferry will be manoeuvring between the linkspan at the existing East Cowes Red Funnel Terminal berth and the new lay-by berth and vice-versa to allow safe access and egress for the Red Funnel vehicle ferry.

All vessels should navigate with particular caution in and around these areas and not impede the safe passage of the ferries.

It is strongly recommended that all vessels maintain a listening watch on VHF Channel 69.

Cowes Harbour General Directions require all vessels over 20m in length to give notification of their movements on VHF Channel 69.

Please see the accompanying chartlet below:



Precautionary Areas in Cowes Harbour Inner Fairway

Capt. Stuart McIntosh

Harbour Master, Harbour Office, Town Quay, Cowes, Isle of Wight, PO31 7AS

Email: chc@cowes.co.uk

Website: www.cowesharbourcommission.co.uk

11th June 2019

Owners, Agents, Charterers, Marinas, Yacht Clubs and Recreational Sailing Organisations should ensure that the contents of this Notice are made known to the masters or persons in charge of their vessels or craft.

It should be noted that Local Notice to Mariners are issued as guidance by Cowes Harbour Commission to aid safe navigation for all Harbour users. Whilst they cannot be legally enforced, by not complying with the advice you may be placing yourself, your crew or other harbour users at risk.