



COWES HARBOUR COMMISSION

LOCAL NOTICE TO MARINERS No. 14 of 2018

Speed Limit and Wash in Cowes

All Harbour users are reminded of the General Directions concerning the speed limit and wash within Cowes Harbour.

3.2. Speed Limit:

3.2.1. Every vessel navigating the Inner Harbour of Cowes **or within 100 metres of the Mean High Water Mark** (please see figure 1) shall unless otherwise authorised by the Harbour Master in writing, subject to the requirements of maintaining adequate steerage way and control, be navigated at a speed not exceeding **6 knots through the water**.

3.2.2. Complying with the maximum permitted speed will not exonerate the Master of any vessel from the responsibility of reducing speed as necessary in the observance of normal practice of safe seamanship. This includes, but is not limited to, when passing mooring trots, pontoons, vessels alongside quays, jetties or pontoons, vessels engaged in maritime works and when approaching the Cowes Chain Ferry. Vessels shall at all times be navigated with care and caution and in such a manner so as not to endanger the safety of other persons or cause nuisance to the occupants of any other vessel, person or property.

3.3. Wash - A vessel shall not be navigated or manoeuvred in any part of the Inner Harbour or within 100 metres of the shore (please see figure 1) in a manner or at a speed so as to cause wash to be generated that may cause damage to or endanger the safety of other persons, vessels or property.

3.4. Navigation in the Shrape Watersports Area – Within the Shrape Watersports Area (see figure 1) the following activities are permitted to exceed the 6knot speed limit if safe to do so:

- i. Dinghy and Day Boat Sailing
- ii. Wind Surfing
- iii. Kite Surfing
- iv. Rowing
- v. Support and rescue craft involved in the above activities.

3.5. Speed Exemptions - General Direction 3.2.1 and 3.2.2 shall not apply to any vessel on any occasion when it is being used by the Police, Fire Service or RNLI or other recognised rescue or patrol craft in an emergency situation, or for the purposes of enforcing these General Directions or any Special Directions.

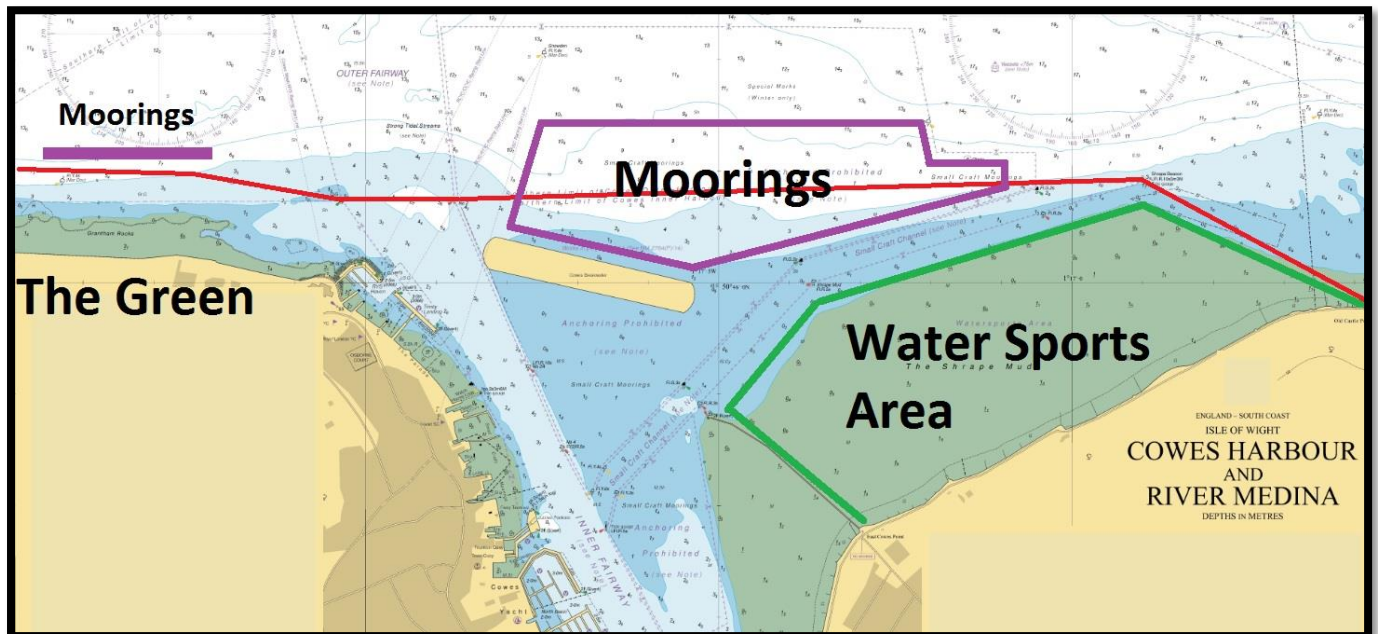


Figure 1 – Red Line is the Northern Limit of Inner Harbour

All mariners wishing to exceed 6 knots, and as such produce wash, once clear to the north of the Inner harbour and heading west, are advised that for the safety of those using the waterfront off the Green, they pass to the north of the seasonal mooring buoys indicated by the purple line in figure 1. For those proceeding to the east, please be aware of the seasonal (Jun – Sep) small craft moorings north of the detached breakwater as highlighted in purple in figure 1.

Capt. Stuart McIntosh

Harbour Master, Harbour Office, Town Quay, Cowes, Isle of Wight, PO31 7AS

Email: chc@cowes.co.uk Website: www.cowesharbourcommission.co.uk

25th June 2018