



# COWES HARBOUR COMMISSION

## LOCAL NOTICE TO MARINERS No. 10 of 2019

### Dredged Eastern Channel

*(This notice replaces LNTM 45 of 2016 which is hereby cancelled. LNTM 33(T) of 2018 and 03(T), 05(T), 06(T), 07(T) & 08(T) of 2019 are also cancelled)*

The new, dredged Eastern Channel connects the Inner Fairway with the Solent. This allows small vessels, up to 20m in length, approaching from or departing to the north or east to use the Eastern Channel and avoid the busy main harbour entrance and therefore de-conflicting with the larger commercial vessels.

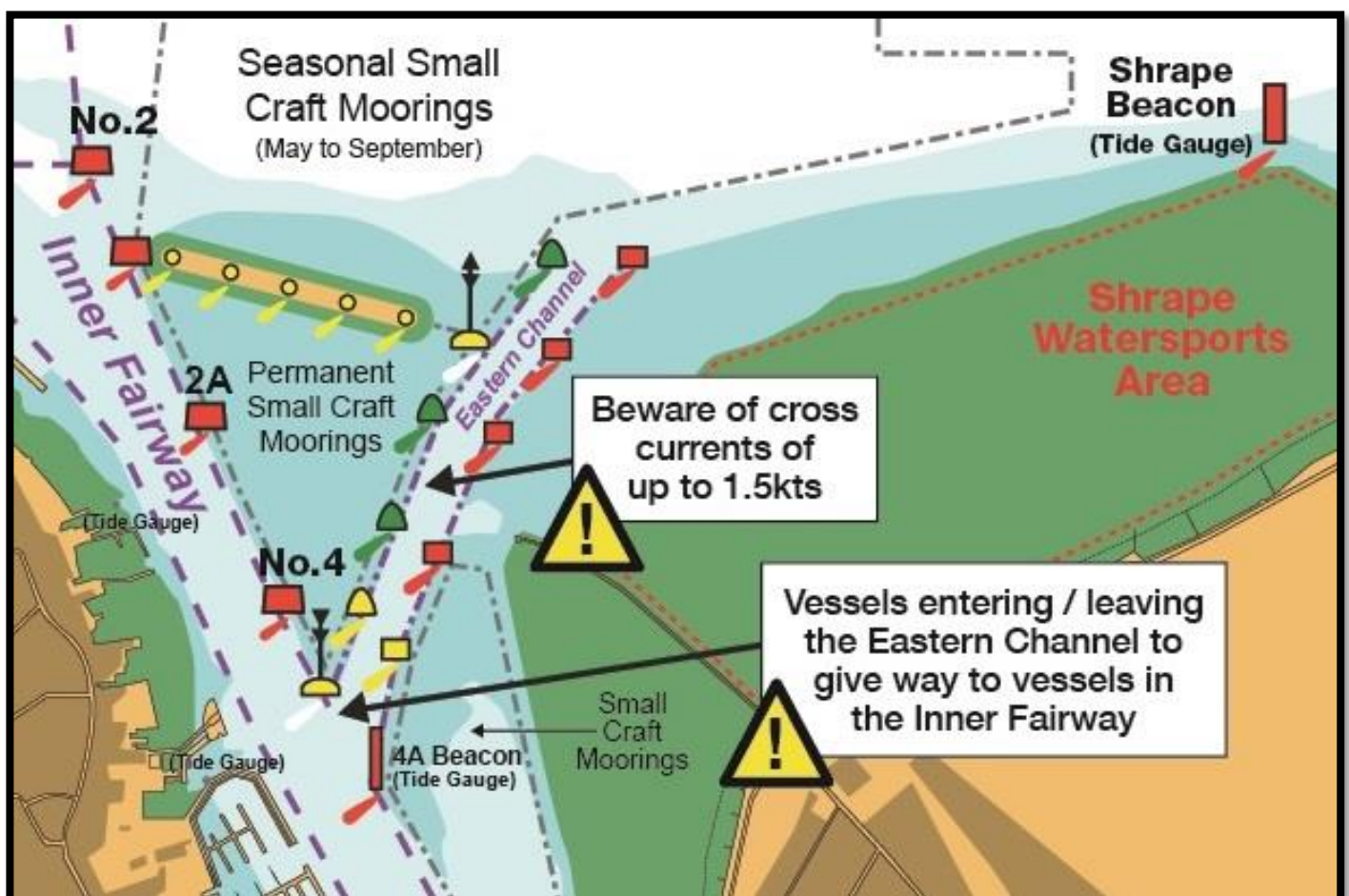


Fig 1: Eastern Channel

## Lights and positions:

Station	Colour	Type	Light Characteristic	Lat. (N)	Long. (W)
EC1	Green	Buoy	Fl G. 3s	50 46.020	001 17.465
EC2	Red	Buoy	Fl R. 3s	50 46.020	001 17.418
EC3	Black-Yellow-Black	E Cardinal Buoy	Q. Fl 3	50 45.985	001 17.512
EC4	Red	Buoy	Fl R. 5s	50 45.980	001 17.478
EC5	Green	Buoy	Fl G. 2s	50 45.946	001 17.567
EC6	Red	Buoy	Fl R. 2s	50 45.936	001 17.536
EC7	Green	Buoy	Fl G. 4s	50 45.900	001 17.600
EC8	Red	Buoy	Fl R. 4s	50 45.869	001 17.580
EC9	Yellow	Float (Stbd)	Fl. Y. 4s	50 45.850	001 17.635
EC10	Yellow	buoy (Port)	Fl. Y. 3s	50 45.798	001 17.627
EC11	Yellow-Black	S Cardinal Buoy	Q Fl. 6 + LFl	50 45.800	001 17.668
4A Beacon – New position	Red	Pile	LFl. R. 5s	50 45.757	001 17.630

## Navigational Safety:

- Small vessels, up to 20m in length, approaching from or departing to the north or east may use the Eastern Channel.
- The dredged depth in the Eastern Channel is 2.25 metres below chart datum; therefore the minimum depth of water in the channel is equal to the height of tide + 2.25m.
- Tide gauges are on the Shrape Beacon and 4A Beacon (see Figure 1).
- The channel is, at its narrowest, 35m wide.
- Vessels using the Eastern Channel are to adhere to the harbour speed limit of 6kts through the water and no wash.
- Vessels joining or leaving the Eastern Channel are advised to give way to all vessels navigating in the Inner Fairway.
- Mariners must ensure that Rule 9 of the Collision Regulations is complied with. Particular care should be taken to avoid impeding commercial vessels in the Inner Fairway, this includes passenger ferries (Red Jets) turning off Cowes Town Quay and large vehicle and freight ferries approaching and departing from East Cowes Red Funnel Terminal.
- A west-south-westerly current, of up to 1.5kts during spring tides, may be experienced between HW-2.5hrs and HW, west of the Shrape Breakwater; and

- A north-westerly current, of up to 1.5kts during spring tides, may be experienced from HW +3hrs to HW +5hrs, west of the Shrape Breakwater. Caution should be exercised so as to not be set into the path of other vessels using the Eastern Channel or vessels navigating in the Inner Fairway.
- Care should be taken to adhere to the buoyed channel and not to enter the 'small craft moorings' (see Figure 1), these are prohibited areas.
- The area to the east of the Shrape breakwater has been designated a watersports area and craft not using the area should ensure they remain well clear.

**Capt. Stuart McIntosh**

Harbour Master, Harbour Office, Town Quay, Cowes, Isle of Wight, PO31 7AS

Email: [chc@cowes.co.uk](mailto:chc@cowes.co.uk)

Website: [cowesharbourcommission.co.uk](http://cowesharbourcommission.co.uk)

**29<sup>th</sup> March 2019**