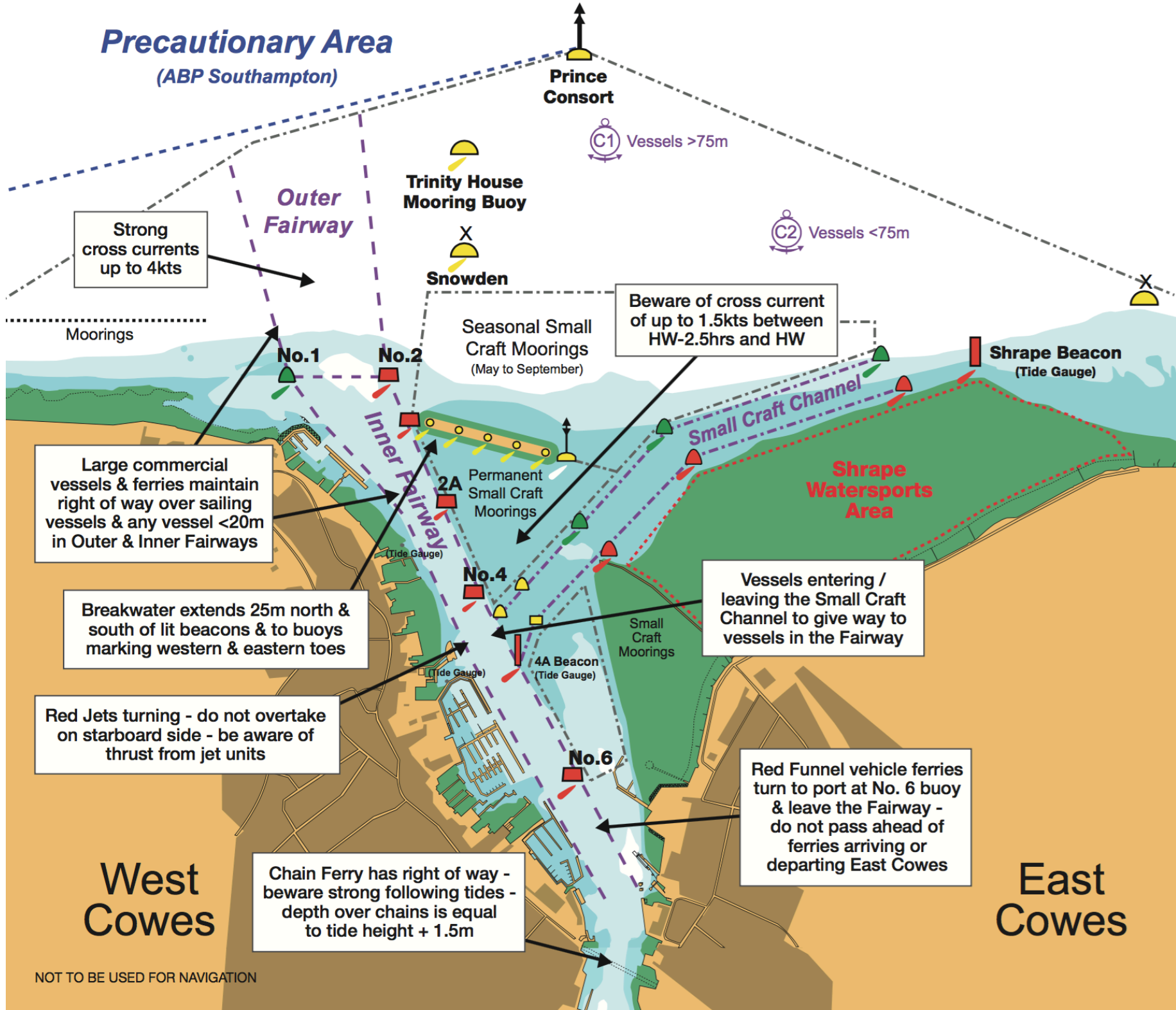


Precautionary Area

(ABP Southampton)



Prince Consort

C1 Vessels >75m

C2 Vessels <75m

Strong cross currents up to 4kts

Outer Fairway

Trinity House Mooring Buoy

Snowden

Beware of cross current of up to 1.5kts between HW-2.5hrs and HW

Seasonal Small Craft Moorings (May to September)

Shrape Beacon (Tide Gauge)

Large commercial vessels & ferries maintain right of way over sailing vessels & any vessel <20m in Outer & Inner Fairways

Shrape Watersports Area

Vessels entering / leaving the Small Craft Channel to give way to vessels in the Fairway

Breakwater extends 25m north & south of lit beacons & to buoys marking western & eastern toes

Red Jets turning - do not overtake on starboard side - be aware of thrust from jet units

West Cowes

Chain Ferry has right of way - beware strong following tides - depth over chains is equal to tide height + 1.5m

Red Funnel vehicle ferries turn to port at No. 6 buoy & leave the Fairway - do not pass ahead of ferries arriving or departing East Cowes

East Cowes